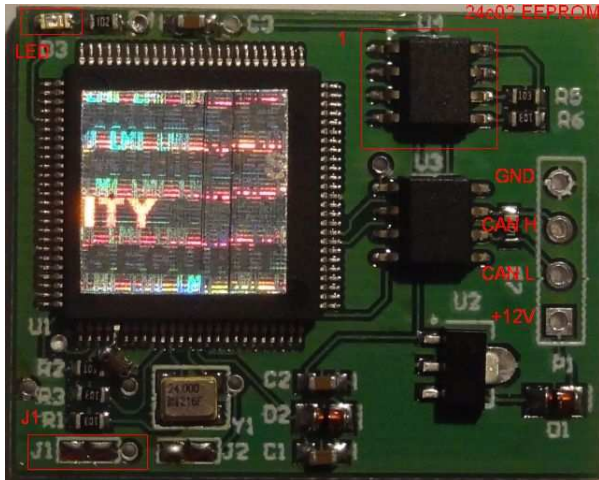


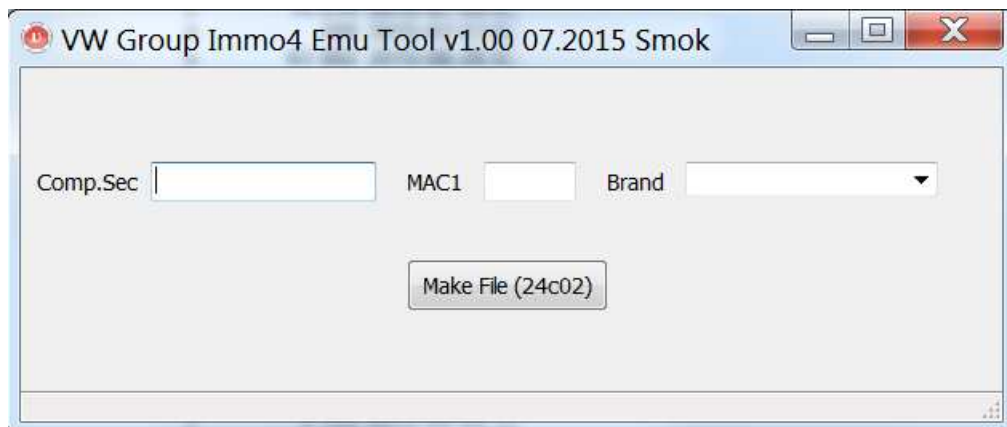
Immo 4 Audi/VW/Seat/Skoda Emulator

(EDC16, EDC17, MED17, MED9.1, MED9.5, PCR2.1, PPD1 etc...)

Emulator is designed for ECU with immo4 system. It replaces the original immo system and allows the engine to start.



to install Emu you have to solder 4 wires and program 24c02 EEPROM (on Emu Board). File is available from us & program which will create file for 24c02.



You must write in the program 6 bytes component security and 2 bytes of MAC1 (we read this from ECU) and select brand of car (VW/Audi/Seat/Skoda). Program then creates file. This file we then write into 24c02 eeprom installed on Emulator Board.

We then write data into EEPROM by programmer. We can program in circuit (if programmer has adjustable voltage -3.3V) or we can desolder 24c02 and program it in socket.

Now we can solder 4 wires (+12V (ACC),GND,CAN H,CAN L) directly in ECU (or in another place).

Switch ignition on, LED installed on EMU should illuminate. If LED blinks very fast for some seconds then CS or MAC is not set properly.

If LED blinks 1 long and 4 short then EEprom 24c02 on Emu board is not programmed or wrong data is programmed.

If We solder J1 jumper and connect power into Emu board (12V and GND) LED blinks with Emu SW version. Actual SW version is 21 (2 long blinks and 1 short)