

Mercedes Dash W205 W447 W222

Table of contents

Getting Started	3
System requirements	3
Getting help	3
Options	3
Write KM 2014..2015	4
Write KM 2015+	4
Write KM W447 (Visteon only)	6
Write KM W205/W447 RH850 2017...2018	7

Getting Started

System requirements

Dashboard Mercedes W205 W222 W447 -70F3525 (V850E2) and RH850 (R7F7014xx)

There are 3 generation of W205/W447/W222 Dashboards:

- ...2015 - 1st generation dashboards 70F3525 require install synchro CAN Filter and we can change KM OBD
- 2015-2017 -2nd generation dashboards 70F3525 - it require operation by OBD+Jtag , **not** require install synchro CAN Filter
- 2017 -3rd generation dashboards RH850 (R7F7014xx) it works OBD and require install synchro CAN Filter.

Mercedes W447 can has Visteon Dashboard with external EEPROM , this dash type we can do nly by programmer and require install synchro CAN Filter.

We need UHDS Tool and for dashboard 2016 + we need Jtag Programmer

Activations:

UHDS:

- MS0006 -Dashboard W205/W222 2014..2017
- MS0009 -Assist Manager for Erase/Write/Read Assist W205/W222/W447
- MS0010 -Dashboard W447 2014..2017
- MS0012 -Mercedes W213 V850 or RH850 and W222 with RH850
- MS0013 -Mercedes W205/W447 RH850 2017..2019

JTAG:

JG0022 -for dashboard W205/447/222 with 70F3525 2015...

Getting help

Options

Dashboards VDO on MCU 70F3525

1. Read Km

By press this button we can read actual km from Dash and EZS .

2. Read EE

We can read full backup of EEprom and save as bin file. This file can be used later for write back to dashboard OBD.

Important!!! This file is not usable for write by Jtag programmer.

3. Write EE

Write EEprom into Dashboard. It skip area where is stored km - after we write eeprom km will be not change.

4. Read Services

We can read list of assist. In some kind of dash it show Event history too.

5. Erase all srv.

This button you have to use if you want erase all history of services (assists). After this operation list

of assist will be empty.

6. Set Service

This function we use for erase assist which are higher km as main km . After this operation stay only assist which are km lower as displayed km

7. Learn Dash

Option for learn dash . For dashboard before 2016 after change KM we have to use this operation. If dash is not learned then on display you will see'-----'

8. Write New Services

This function is for write new list of assist. If we before this operation 'Erase all srv.' we can set all assist from begin.

9. Rest Insp.

We can Reset Inspection . It clear reminder about excited service. It works similar as normal reset inspection Xentry.

10. Erase Events

This option is for clear history of events stored in dashboard. Not all kind of dash has support to event list.

11. Read SCN

It read full backup of EEPROM and read configuration

12. Program MCU (Jtag)

For use this option we need use Jtag Programmer with activated license JG0022 (850E2).

13. Write KM

Press this option for change KM.

For dashboards with software before 2016 we can use this operation without any additional actions.

Ford dashboard with firmware 2016- first we need unlock dashboard by Jtag. Please look in chapter 'Write KM'.

Write KM operation should be performed in different way for dashboard before 2016 and after 2016.

Write KM 2014..2015

Dashboard W205 W222 W447 2014...2015

1.

For that years we can write KM by Press 'Write KM' button. If Km will be set lower as in EZS we need install synchro CAN Filter

block synchro millage (km<>EZS)

Write KM 2015+

Dashboard W205 W222 W447 2015...

For dash 2016... we need perform more operations.

Below is list operation what you have to do.

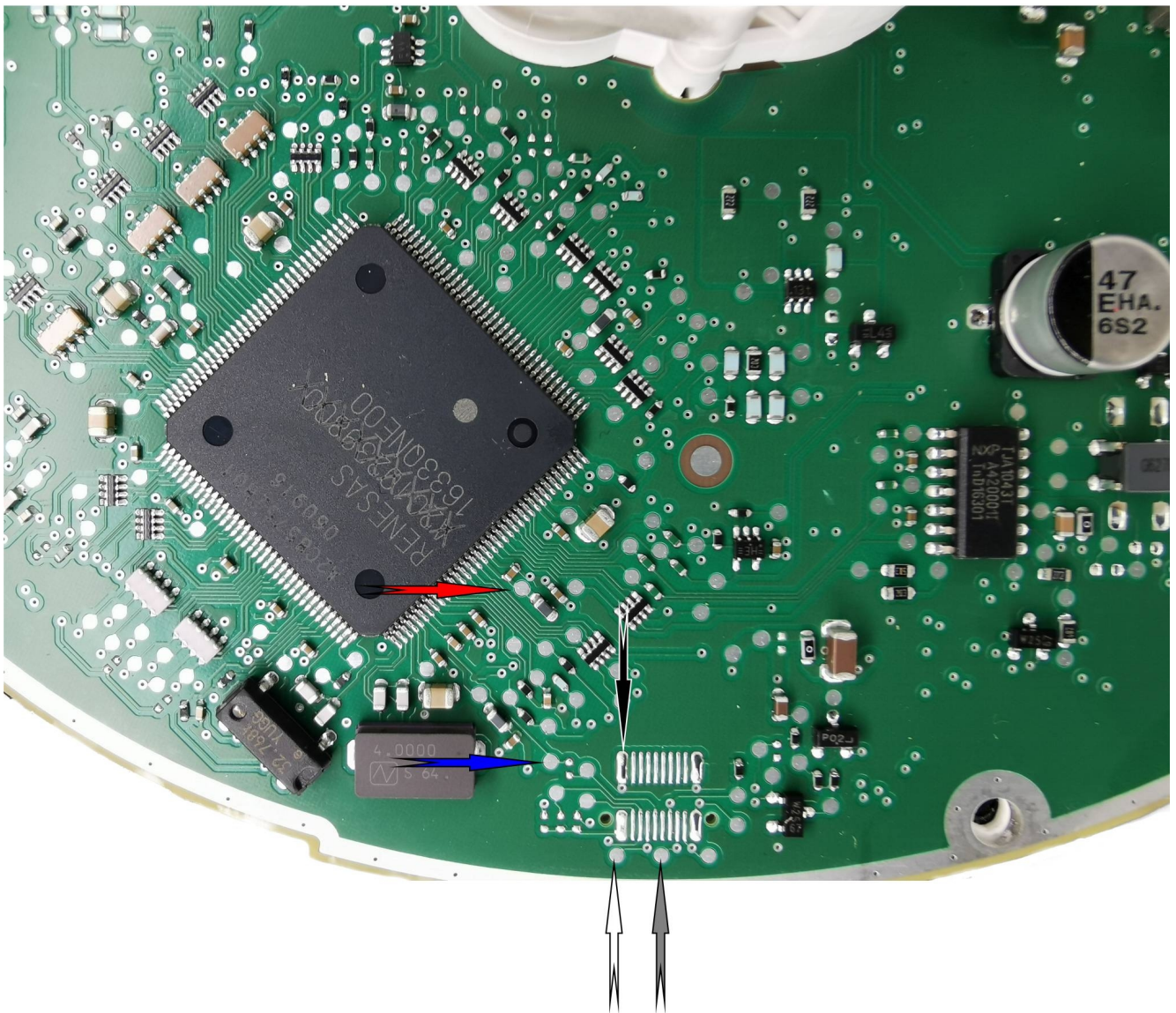
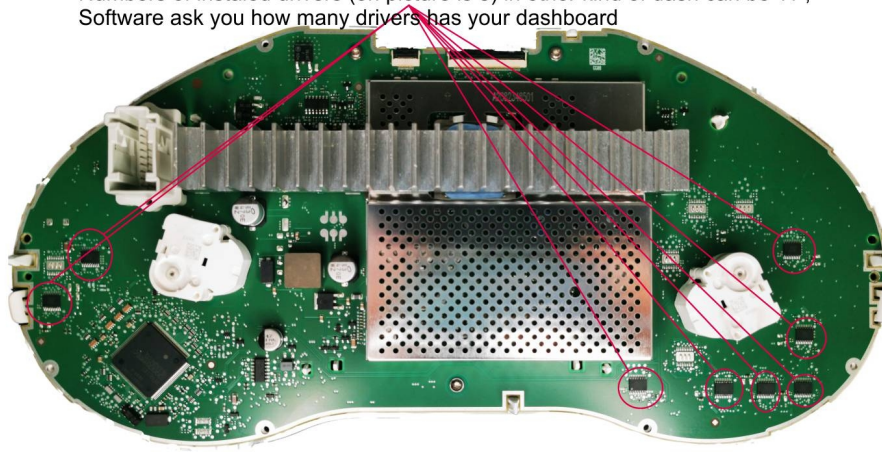
For first use we need to download database and install.

Links for download: <http://smokftp.smok.com.pl/UHDS/AllInOne/MercedesFiles/setup.exe>

1. Read KM (OBD)
2. Read SCN (OBD) . After it program ask us for mile name for eeprom to save (.bin) and next for name of SCN coding file to save (.ms1)
3. Now we remove dashboard and must connect Jtag to points on board of dashboard. Picture how to solder wires are bellow.
We press button 'Program MCU (Jtag)' soft ask us to select file to open (.ms1) which was read in point 2, now MCU will be program.
Now we can put back dashboard into car.
4. Write EEPROM - we choose file which are was read in point 2 (.bin file)
5. Write KM
6. Now we can read Assist and if something is not as we need we can use option 'Set Services' or 'Write New services'

It is NOT need to install CAN FILTER for block synchro km Dash<>EVS

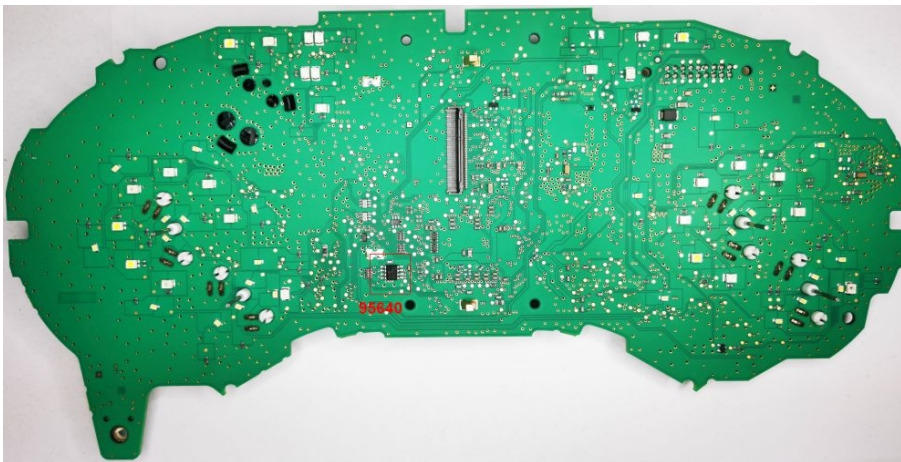
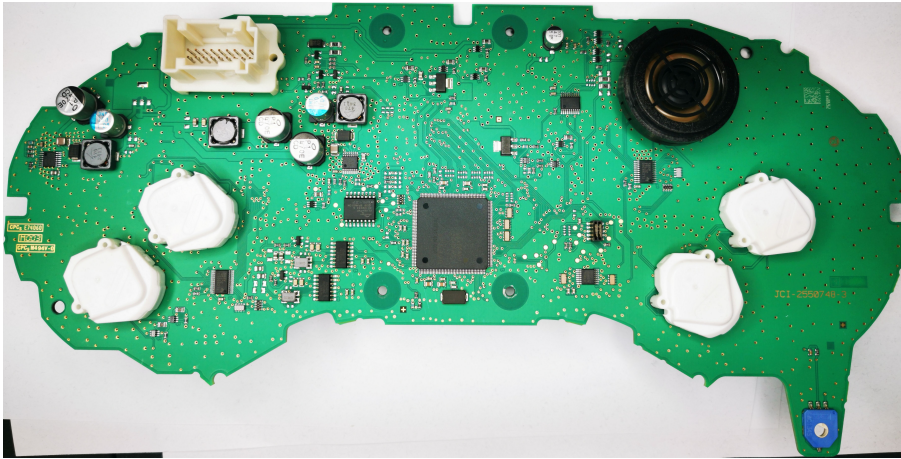
Numbers of installed drivers (on picture is 8) in other kind of dash can be 11 ,
Software ask you how many drivers has your dashboard



Write KM W447 (Visteon only)

Dashboard W447 Visteon

For this kind of dash only possible change option by dump Tool. Dash has EEprom 95640.



Write KM W205/W447 RH850 2017...2018

1.

For that years we can write KM by Press 'Write KM' button. If Km will be set lower as in EZS we need install synchro CAN Filter
block synchro millage (km<>EZS)