

Honda_XADV

Table of contents

Getting Started	3
System requirements	3
Getting help	3

Getting Started

System requirements

Requirements:

- Jtag Interface
- JG0034 activation (for r/w MCU)
- UH0005 (for programming KM) *

* for programming KM you need both licenses (JG0034+UH0005)

Getting help





Connection:

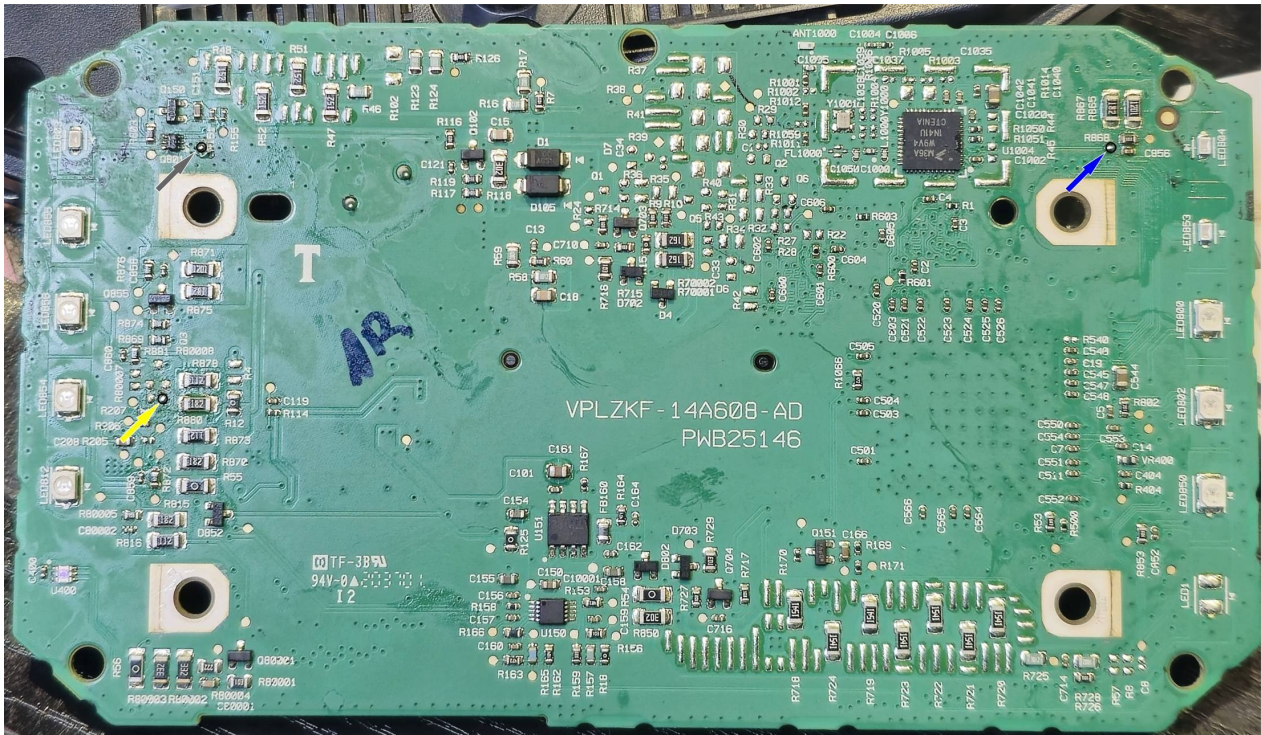
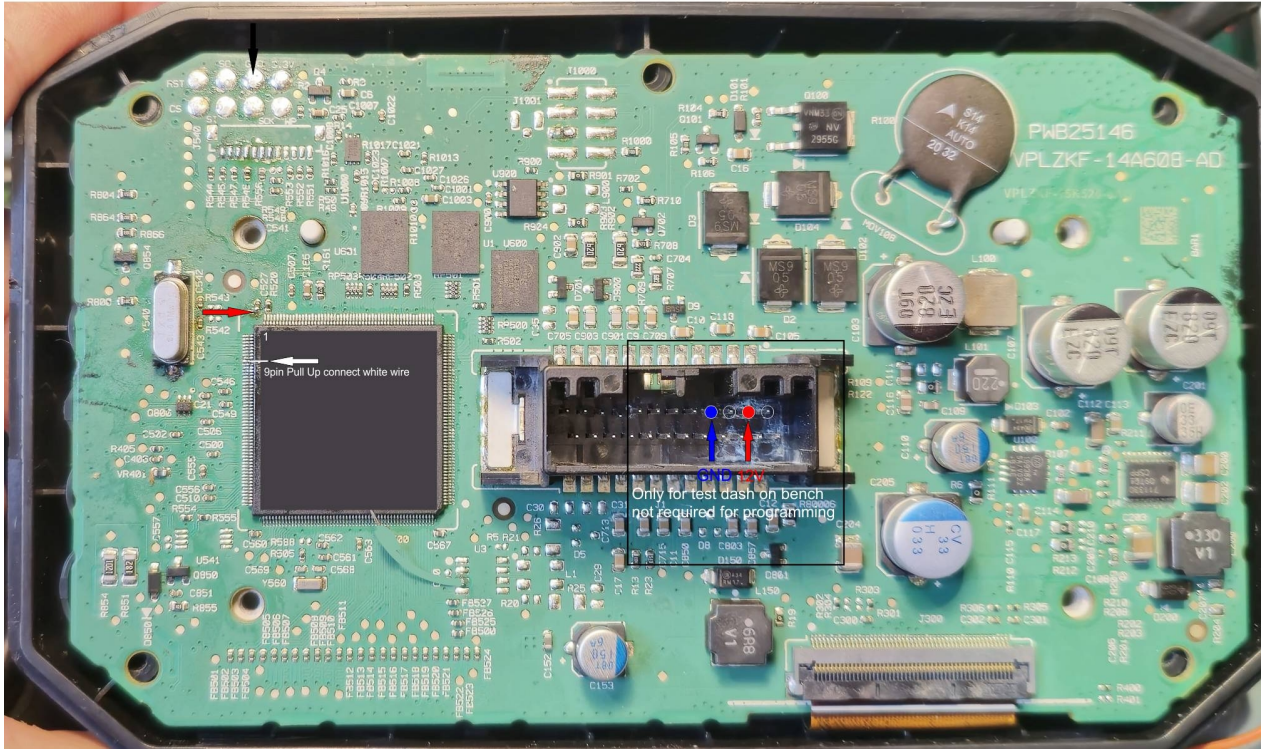
Connect wires from Jtag to points show on pictures. Remember lift pin9 and solder to this pin white wire, AftEr finish job put pin to board as original

Connect all required wires:

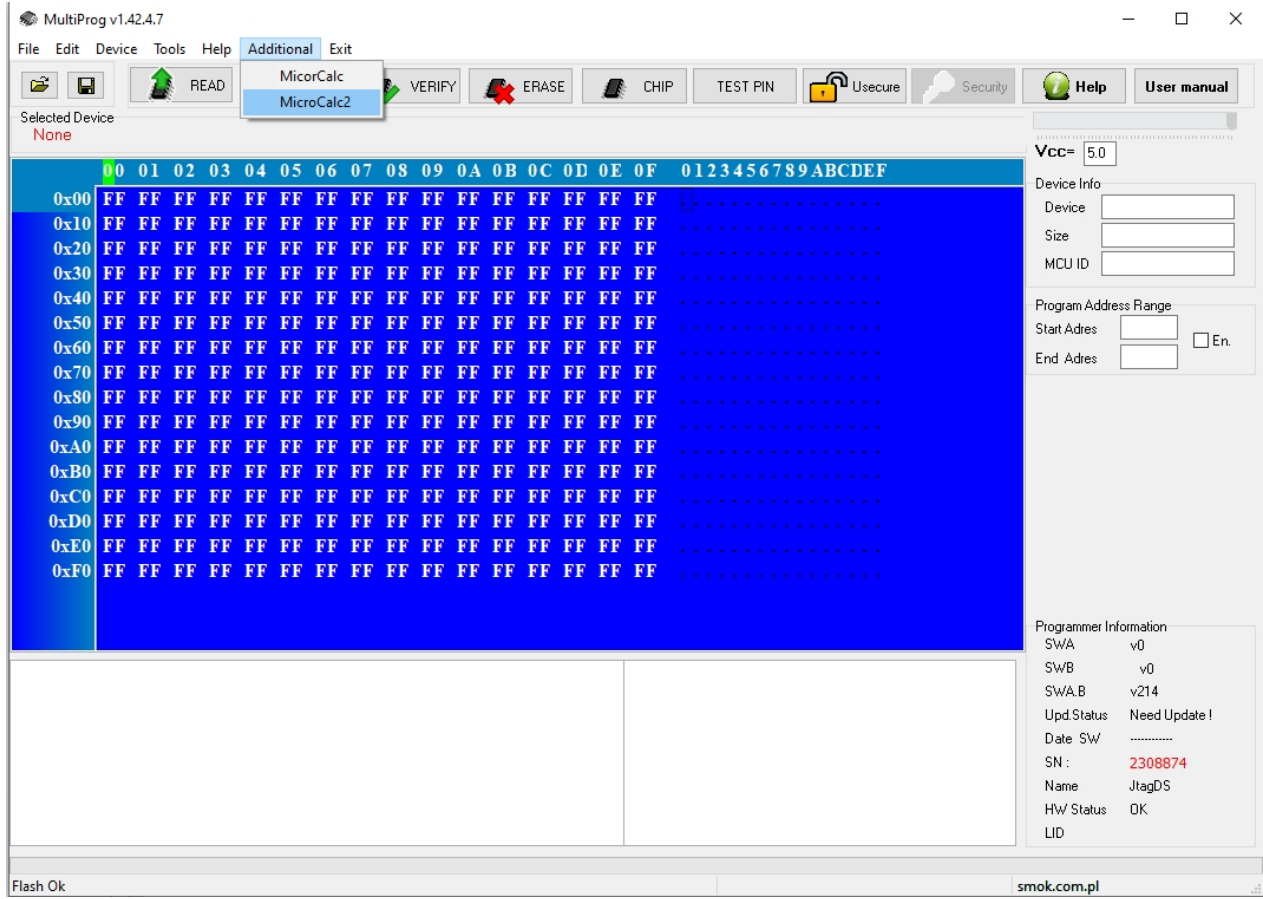
- Black
- Blue
- Yellow
- Gray
- White
- Red

You can switch Dash on bench and check km on display . Connect power supply 12 Dash Connector as on picture. For programming this connection is not required

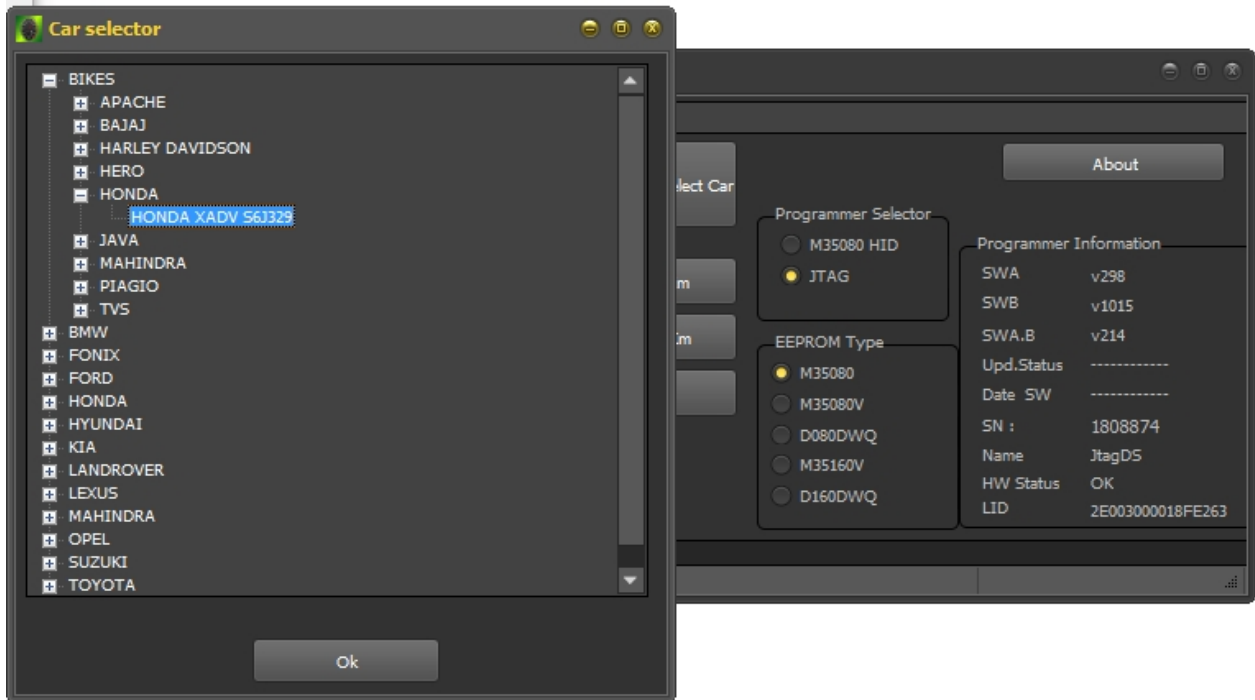
Honda XADV S6J329 8MHz



Change Km by microcalc2:
Start Multiprog and from Additionl Menu start Microcalc



Select Jtag and from menu Bike select Honda XADV



Now you have possibility to read and write Km by Jtag