

Renault Keys Card and Immo Programming

Table of contents

Getting Started	3
System requirements	3
Getting help	3
Renault Clio IV Card Programming 2012... OBD	3

Getting Started

System requirements

Required Tools and activations:

1. UHDS Tool
2. Keymaker or Other Tool for Programming Hitag 3 AES
2. License RT0031

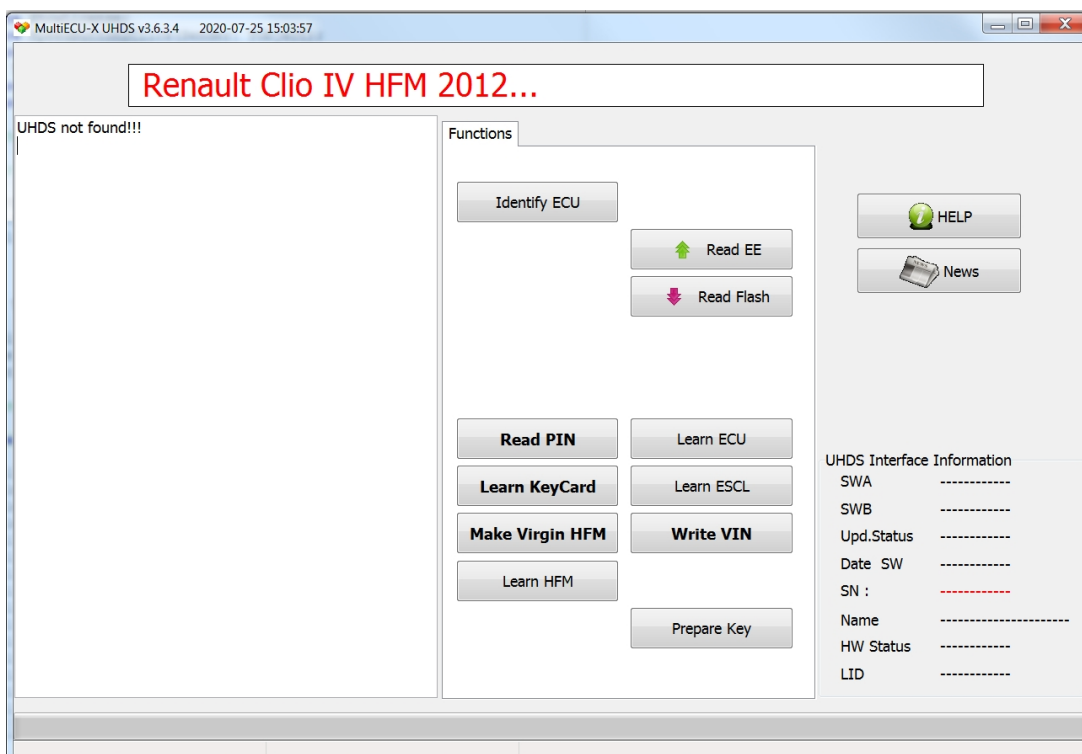
Getting help

Renault Clio IV Card Programming 2012... OBD

Renault Clio IV 2012...2019 , Capture 2012 , Traffic 2013... Card Programming (only Card system , not regular Key !!!)

All operation can be performed by OBD without remove any modules from Car.

Bellow is show panel of software with showed available options.



There is some different for cars 2012...2015 and cars after 2015.

How To learn Card in cars before 2015:

1. Read PIN . If this operation is failed mean car is after 2015 and You have to use procedure for cars after 2015.
2. Put new blank (or renewed) card on Keymaker and press button 'Prepare key'.
3. Press Button Learn KeyCard. All cards stored are erased.
Software ask how many cards you need to learn and you learn one by one each card.
Learn Process must be performed on all cards which will be usable.
Original Cards from this car not require preparation.
We can Learn original cards from this car and prepared card. Card used from other car can not be

learned to car.
That is not important cars has all keys lost or not.

That is All :)

How To learn Card in cars before 2015:

1. Press Make Virgin HFM
 2. Press Button Read PIN
 3. Put new blank (or renewed) card on Keymaker and press button 'Prepare key'.
 4. Press Button Learn HFM. In this step software ask you for put card and one card will be learn in this point.
Now car is ready to start on this card.
 5. If we need to learn more cards press button Learn Card and please learn all required card (include card which was learned in point 4)
- That is All :)



Other Available option:

Identify - Show basic information about HFM module

Read EE - give possibility to read EEPROM. For cars before 2015 it works always. For cars after 2015 module must be in virgin state or Card in slot must be recognized and immo must be released.

Read Flash - give possibility to read Flash. For cars before 2015 it works always. For cars after 2015 module must be in virgin state or Card in slot must be recognized and immo must be released.

Learn ECU - adapt new ECU to car. ECU must be in virgin state. Used ECU which are not renewed are not possible to learn

Learn ESCL - adapt new ECU to car. ESCL must be in virgin state. Used ESCL which are not renewed are not possible to learn.

Learn HFM - adapt HFM module to car. Module must be in virgin state before this step. For learn HFM module we must have original card from target car

Important!!!

When You start UHDS please select KeyMaker and if soft say Keymaker must be updated please update Keymaker from soft (option available on upper bar).